

No. 03

Steyn City Case Study - November 2021

VistaClad, Apex | Johannesburg, South Africa | Steyn City

Apex[®]

EVA-LAST[®]
INSPIRED BY NATURE, DESIGNED FOR LIFE.

www.eva-last.com

VistaClad[™]
Cladding inspired by nature



PROJECT DETAILS

Project Name

Stand 71, The Views

Project Type

Decking & cladding

Description

Residential outdoor recreation area decking, and cladding in Apex decking and cladding, Brazilian teak L-finish

Size

Decking: 40 m² (430.5 ft²)
Screening: 110 m² (1,184 ft²)

Product used

VistaClad Cladding, LifeSpan™

Project Location

Steyn City, Johannesburg, South Africa

Date of installation

November 2021

Architect

SBE Africa, Johannesburg, South Africa

General Contractor

Decking: Deckcon Projects, Johannesburg, South Africa

Cladding: Conway Decking & Flooring, Johannesburg, South Africa

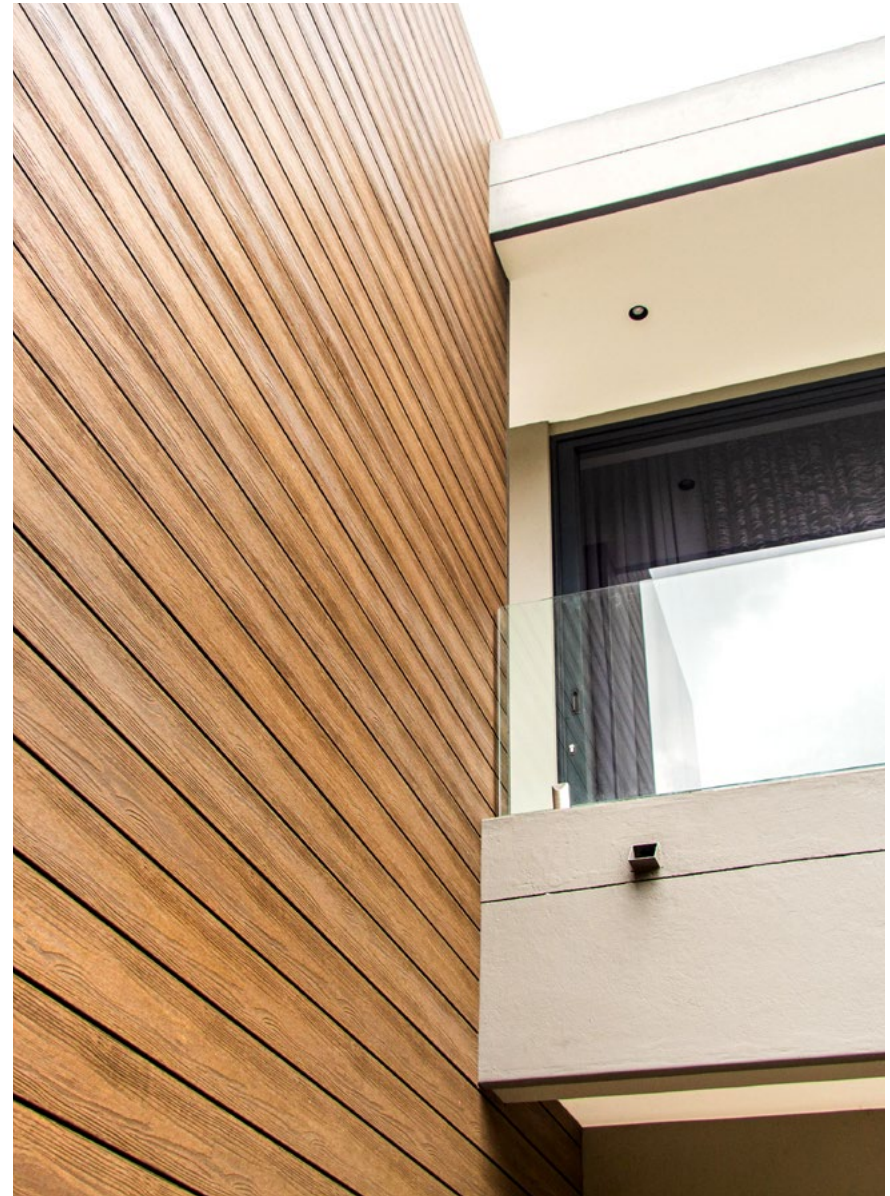


PROJECT OVERVIEW

This project represented the first residential installation of the Apex product range and first use of the new Brazilian teak L-finish in South Africa. Specified by the architects for use as the primary look and feel of the client's outdoor entertainment area, Apex was selected for its ease of installation, long-term performance and high fire and slip ratings, especially critical given the client's brief for landscaping features.

PROJECT CHALLENGE

The installation included outdoor cladding on the building façade around the entertainment area, as well as patio decking, and seating around a fire pit which was the focus of the recreation zone on the property. The client's busy lifestyle and requirements for low maintenance were foremost among considerations, as was longevity and hassle-free performance.





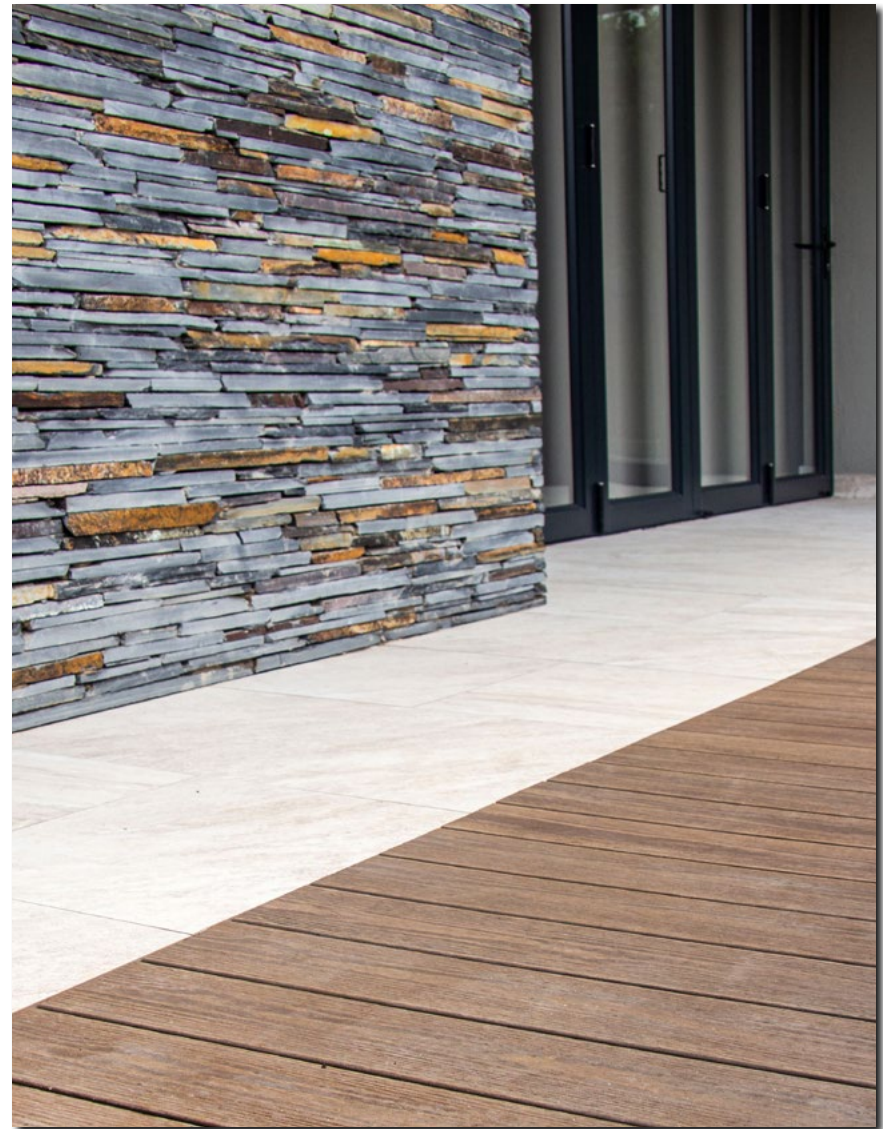
PROJECT SOLUTION

A Class P5/Class R12 slip resistance rating and Class B fire rating, lightweight construction and high impact, scratch, fade and stain resistance ratings of the Apex range led to its specification for use by both major contractors on site – for building and landscaping in a high-traffic area.

PROJECT SOLUTION RESULTS

While installed by different contractors on the same site, the separate phases of the installation project took place in less than two weeks and led to matching appearances providing a high degree of continuity in the outdoor living space.

An additional motivation for choosing an Eva-last product was the environmental credentials of the company's sourcing and manufacturing: the Apex product range is produced from easily replenished bamboo strands and recycled plastics – as many as 2,500 recycled bottles are used for every 10 m² (107.6 ft²) of Apex boards produced.



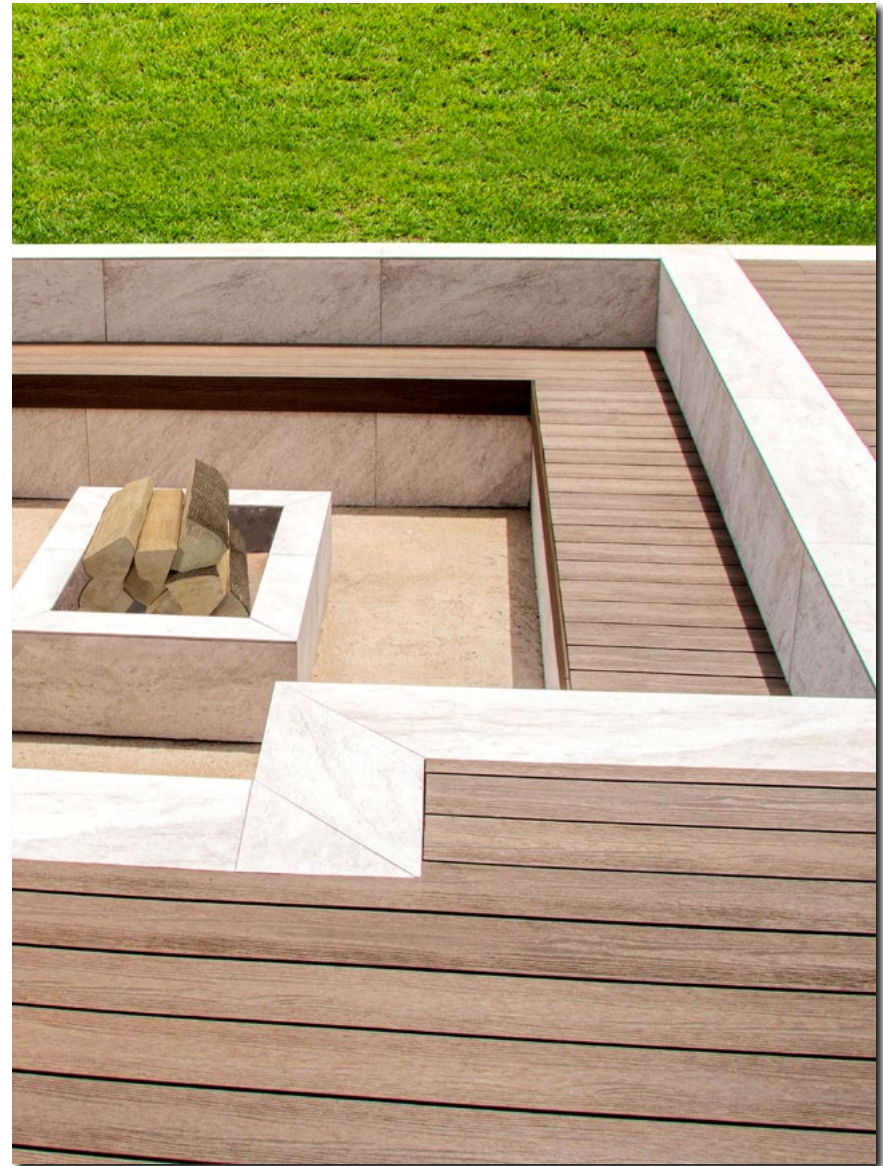


KEY INFLUENCER QUOTE

“What was especially significant was to have the patented qualities of Apex validated by its selection for both decking and cladding in applications which will place high performance demands on the installed materials. While the product’s performance in a range of weather and usage conditions makes it the first choice from a technical point of view, the client – who was reluctant to consider composite materials at first – was ultimately surprised by the material’s realistic timber finish, and settled any possible questions about installing Apex.” – Arnoldt Visser, Eva-last

SUMMARY

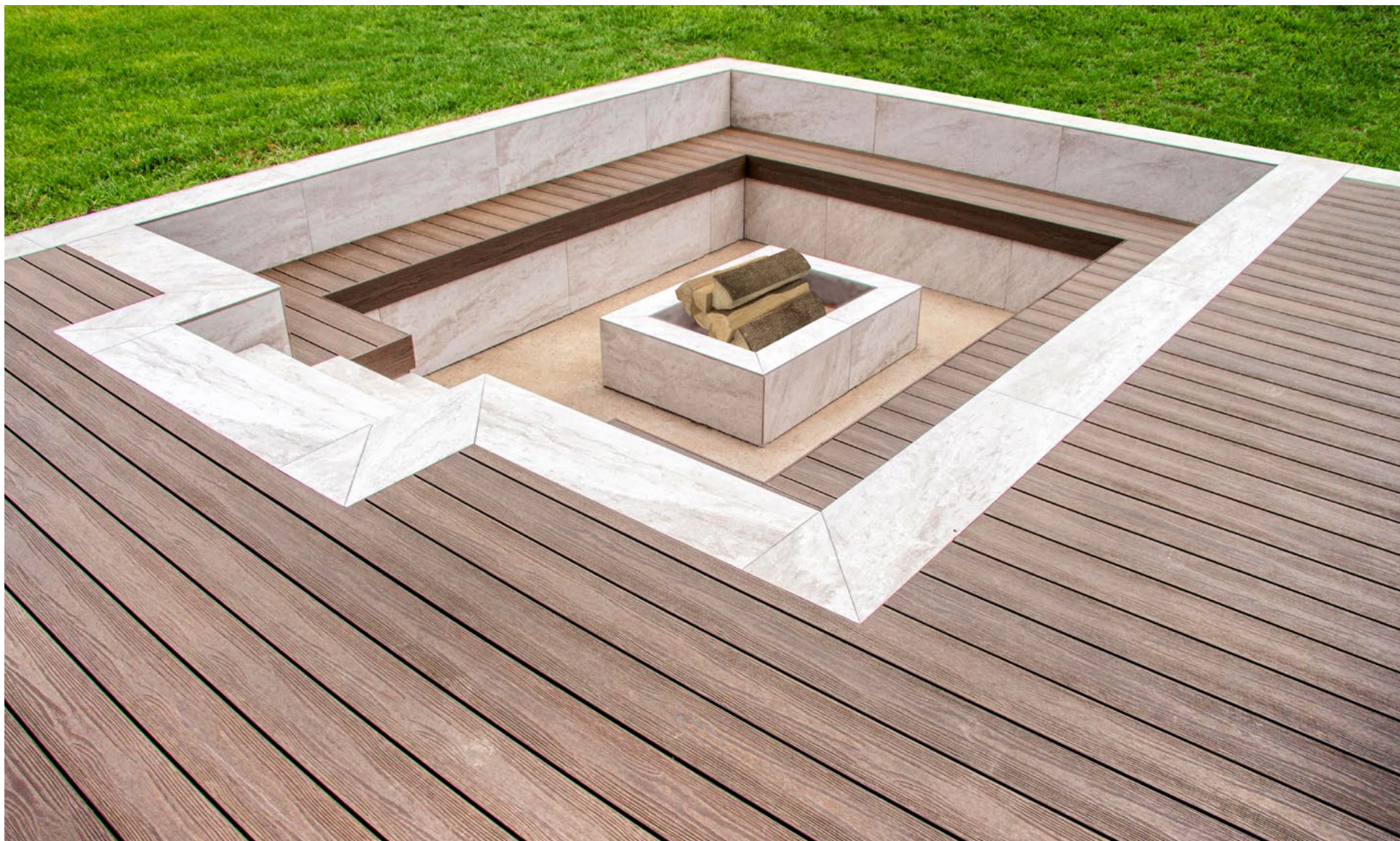
The Apex range by Eva-last was specified for use in South Africa's first residential application to meet the client's requirements for a natural timber aesthetic which could simultaneously handle outdoor weather conditions, high foot traffic and proximity to a fire pit.





ABOUT US

Eva-last is a globally recognized brand that manufactures and distributes specialized bamboo-plastic composite products. Its portfolio includes decking, cladding, support structures, fasteners and complementary products which have been used in indoor and outdoor projects in over 35 countries. Its environmentally-friendly products are created using solar power and offer low-maintenance, long term performance.



Apex[®]

EVA-LAST[®]
INSPIRED BY NATURE, DESIGNED FOR LIFE.

www.eva-last.com

VistaClad[™]
Cladding inspired by nature