

LIFESPAN™

COMPOSITE ARCHITECTURAL BEAMS



HYBRID ARCHITECTURAL SYSTEM



www.eva-last.co.za

A PRODUCT BY

EVA-LAST
INSPIRED BY NATURE, DESIGNED FOR LIFE

LIFESPAN™

COMPOSITE ARCHITECTURAL BEAMS

HYBRID ALUMINIUM BAMBOO COMPOSITE BEAM

Lifespan hybrid aluminium composite beams give you the creative freedom to build more memorable outdoor architectural designs. These multipurpose beams have the functionality, resiliency, and beauty to make your project remarkable. Whether you choose to use Lifespan beams for pergolas, entryways, dramatic screening, or your own creative architectural vision, revel in the feeling of building something truly innovative.

PHOTOGRAPHY CREDIT: CHRIS SCOTT | COPYRIGHT © SCOTTY PHOTOGRAPHY

HIGH PERFORMANCE FOR HIGH EXPECTATIONS

Lifespan beams add style and functionality in a diverse range of applications. Enjoy the shade and privacy of a pergola or screen, or enhance the appeal of your home exterior with beams that give the look of wood without the maintenance hassles. The versatility of Lifespan decorative architectural beams is matched only by their beauty.



PERGOLAS



PRIVACY SCREENS



CLADDING & SOFFITS



DECORATIVE ARCHITECTURE



For more information on Lifespan visit www.eva-last.co.za



TAKE HOME THE BENEFITS



DESIGN VERSATILITY

Architectural beams offer a diverse range of aesthetic applications



LIGHTWEIGHT DESIGN

Specialised aluminium core for easier installation at height



LOW-MAINTENANCE

The look of timber beams without the upkeep



INCREASED SPAN

Reinforced bamboo composite beam with built-in aluminium core



DECAY RESISTANT

Resists biodegradation, corrosion, insects, & harsh weather



FADE RESISTANT

Built-in UV protection for beautiful durability



REINFORCED MODULAR COMPOSITE

Lifespan architectural beams offer design versatility and increased span thanks to their specialised aluminium core that makes for easier installation at height. The outer coating of low-maintenance bamboo composite resists biodegradation, corrosion, insects, and harsh weather, and offers built-in UV protection for beautiful durability. Enjoy the look of timber beams without the upkeep.

TRI-EXTRUDED ALUMINIUM BAMBOO COMPOSITE

- 1 Aluminium core
- 2 Engineered flexible adhesive
- 3 Outer protective composite coating (Eva-tech surface technology)

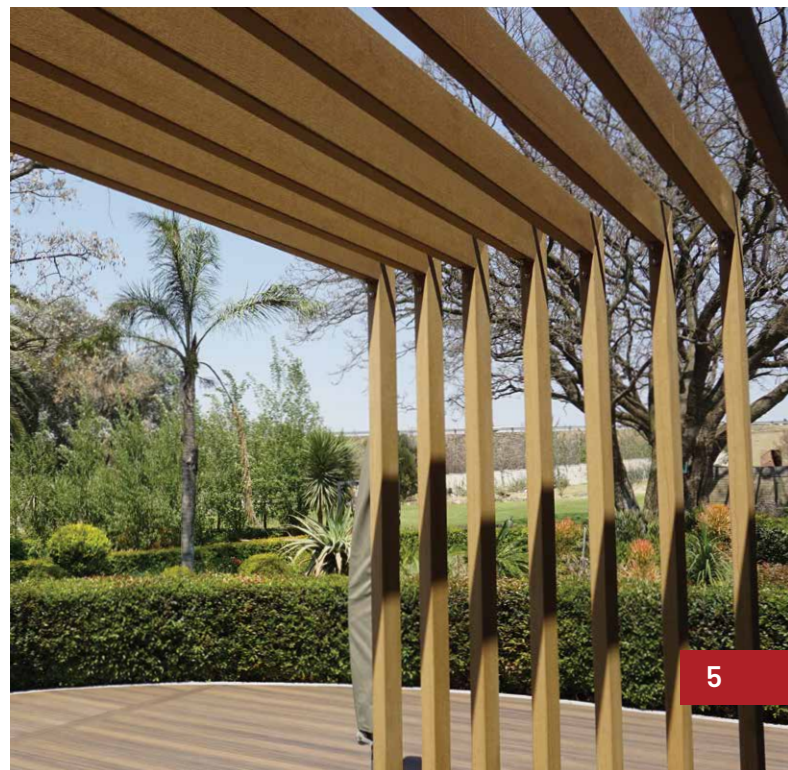


INCREASED SPAN

Lifespan architectural beams offer the span capability of much heavier, solid beams thanks to their built-in aluminium core. This core significantly enhances the dimensional and flexural stability of the beam, while the Eva-tech bamboo composite coating provides a realistic timber aesthetic, as well as resistance to severe climatic and biodeterioration conditions.



PHOTOGRAPHY CREDIT: CHRIS SCOTT | COPYRIGHT © SCOTTY PHOTOGRAPHY





PHOTOGRAPHY CREDIT: PATRICK KING PHOTOGRAPHY
 COPYRIGHT © RADISSON RED HOTEL

PROFILE SIZE OPTIONS

Lifespan hybrid aluminium composite beams are available in a range of sizes and shapes to suit your outdoor project design. Lifespan has been designed to meet industrial norms. However, building codes and standards may differ between jurisdictions or countries. Be sure to consult your local building codes before installing Lifespan composite beams.



Dimensions: 50 x 30 mm
Weight: 0.8 kg/m



Dimensions: 100 x 30 mm
Weight: 1.3 kg/m



Dimensions: 150 x 50 mm
Weight: 3.3 kg/m

End caps



End caps and post caps are available allowing for a neat finish to your Lifespan composite beams.



PHOTOGRAPHY CREDIT: PATRICK KING PHOTOGRAPHY
COPYRIGHT © RADISSON RED HOTEL

COLOUR RANGE: BRUSHED FINISH

TECHNOLOGY: **Eva-tech**[®]



TRI-EXTRUDED ALUMINIUM BAMBOO COMPOSITE



50 x 30 mm

DECORATIVE BEAM

The 50 x 30 mm Lifespan decorative profile enhances your outdoor space with the look of a traditional timber baluster. This compact batten sized profile is a popular choice for creating durable screens, gates, pergolas and other low-maintenance outdoor architectural features.

Available in Eva-tech colour range

Dimensions	50 x 30 mm
Standard length	5,8 m
Weight	0.8 kg/m

Hollow aluminium composite beam

End caps available



Colour matched end caps create a finished look on beam ends.



100 x 30 mm

DECORATIVE BEAM

The 100 x 30 mm Lifespan decorative profile is a fan favourite in the Lifespan range, ideal for creating striking and durable outdoor pergolas, beams, privacy screens, or other attractive architectural features. Enjoy the look of timber beams without the upkeep and environmental toll.

Available in Eva-tech colour range

Dimensions	100 x 30 mm
Standard length	5,8 m
Weight	1.3 kg/m

Hollow aluminium composite beam

End caps available



Colour matched end caps create a finished look on beam ends.



Featured: Lifespan, Eva-tech Savanna
Rectangular (50 x 30 mm) decorative beam





TRI-EXTRUDED ALUMINIUM BAMBOO COMPOSITE



150 x 50 mm

DECORATIVE BEAM

The 150 x 50 mm Lifespan decorative beam is a larger rectangular profile in the Lifespan range and creates a stately aesthetic for your outdoor space, ideal for use as an oversized pergola beam, privacy screen, or in conjunction with smaller Lifespan beams within the system.

Available in Eva-tech colour range

Dimensions	150 x 50 mm
Standard length	5,8 m
Weight	3.3 kg/m

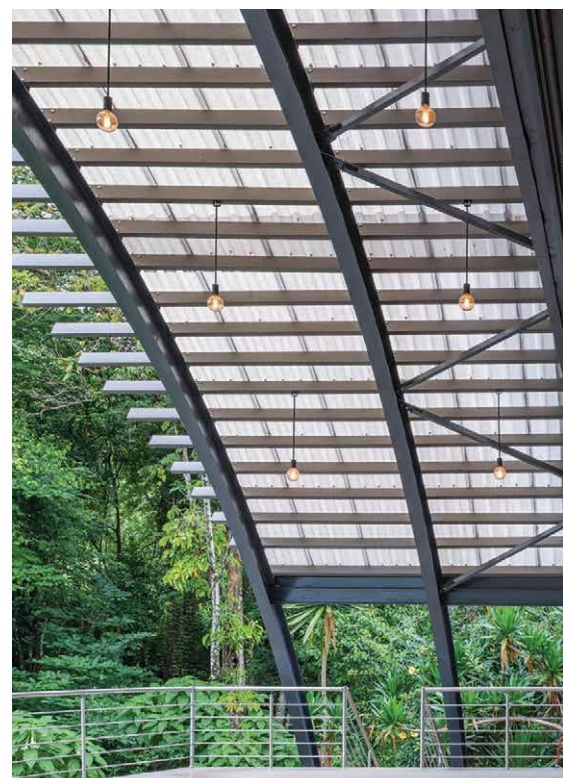
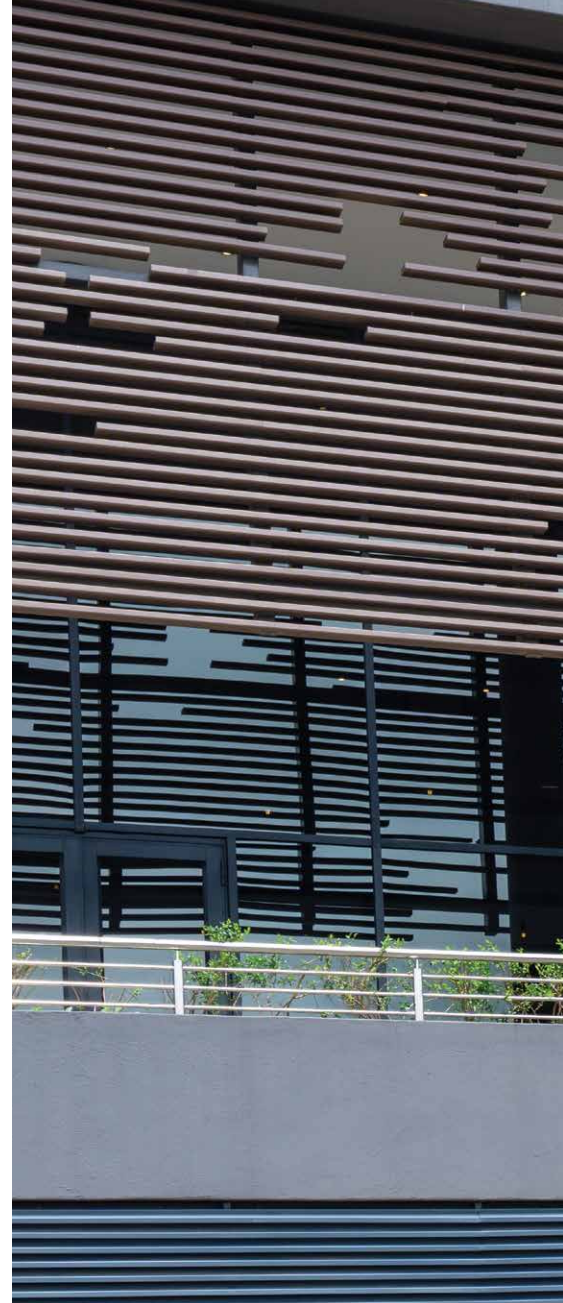
Hollow aluminium composite beam



End caps available

Colour matched end caps create a finished look on beam ends.

Lifespan profiles are available in various lengths. To find out which lengths are available in your region, please visit your local Eva-Last website. Please refer to the Lifespan colours page to see our full colour range.






PHOTOGRAPHY CREDIT: CHRIS SCOTT | COPYRIGHT © SCOTTY PHOTOGRAPHY



Featured: Lifespan, Eva-tech Rusteak
Rectangular (100 x 30 mm) decorative beam

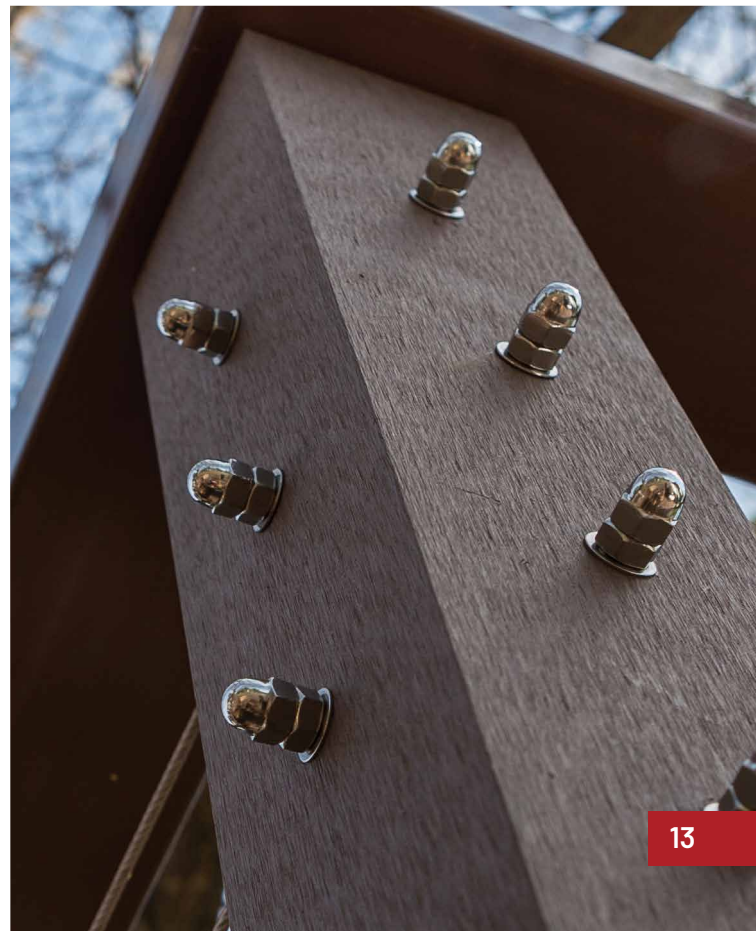


LIFESPAN ACCESSORIES

IMAGE	PRODUCT CODE	STOCK GROUP	COLOUR	SIZE	DESCRIPTION
	PER00540	SG 1	Rustek	100.5 x 30.5	Wood-plastic composite end cap
	PER00550	SG 1	Savanna		
	PER00560	SG 1	Xavia		
	PER00570	SG 1	Aruna		
	PER00580	SG 1	Rustek	150 x 50	Wood-plastic composite end cap
	PER00590	SG 1	Savanna		
	PER00600	SG 1	Xavia		
	PER00610	SG 1	Aruna		
	PER00500	SG 1	Rustek	30 x 50	Wood-plastic composite end cap
	PER00530	SG 1	Savanna		
	PER00520	SG 1	Xavia		
	PER00530	SG 1	Aruna		
	PER00220	SG2	Rustek	50 x 150	Small aluminium powder coated joist end cap
	PER00221	SG2	Savanna		
	PER00222	SG2	Xavia		
	PER00230	SG2	Rustek	132.5 x 102.5	Large aluminium powder coated joist end cap
	PER00231	SG2	Savanna		
	PER00232	SG2	Xavia		
	PER00240	SG2	Rustek	51.6 x 35.7 H. 102	Small aluminium powder coated U-Wall bracket
	PER00241	SG2	Savanna		
	PER00242	SG2	Xavia		
	PER00245	SG2	Aruna		
	PER00240	SG2	Rustek	53.2 x 51.6 H. 150	Large aluminium powder coated U-Wall bracket
	PER00241	SG2	Savanna		
	PER00242	SG2	Xavia		
	PER00255	SG2	Aruna		
	PER00240	SG2	Rustek	40 x 40 H. 34.2	Small aluminium joist u-connector
	PER00241	SG2	Savanna		
	PER00242	SG2	Xavia		
	PER00270	SG2	Rustek	30 x 52 H. 50	Large aluminium joist u-connector
	PER00271	SG2	Savanna		
	PER00272	SG2	Xavia		
	PER00310	SG2	Rustek	N/A	Joist and bearer cross connection bracket
	PER00330	SG2	Savanna		
	PER00320	SG2	Xavia		
	PER00300	SG2	Aruna		



Featured: Lifespan, Eva-tech Xavia
Decorative pergola and posts





LOW ENVIRONMENTAL IMPACT

Holistically sustainable manufacturing & use of raw materials

CHOOSE SUSTAINABLE BUILDING MATERIALS



RENEWABLE RESOURCES & RENEWABLE ENERGY

We believe that how we manufacture is just as important as what we manufacture when it comes to going green. That's why we've traded in fossil fuels for renewable energy. Our products use solar power as part of our manufacturing process. We are fully committed to bringing you a product that's holistically eco-conscious.

Every Eva-Last range pairs recycled raw ingredients with bamboo for a stronger, more sustainable composite. Bamboo rejuvenates over 30 times faster than traditional hardwoods and it releases 35% more oxygen into our air. Eva-Last is internationally recognised for our commitment to the environment. We're proud of the work we do to promote environmental sustainability, and invite you to choose timber alternatives that are gentle on the Earth.

Sales

E-mail: sales@eva-last.com

Head office

JHB: 010 593 9220 | CPT: 021 003 3126 | DBN: 031 331 0068 | GBA: 041 450 2933

- Made from recycled materials
- No trees felled
- No treatment or toxic chemicals required for maintenance
- Solar powered manufacturing processes
- Reduced impact on landfills (recyclable at the end of life)
- Reduced carbon footprint



www.eva-last.co.za

© 2023 Eva-Last reserves the rights to all brands, products, and trademarks within this publication.
Eva-Last ITEM: 623 V1 SA-LIFESPAN BROCHURE

Disclaimer:

Although we make every effort to ensure the information contained in this brochure is accurate, we are NOT responsible for any errors or misprint that occurs and we are NOT responsible for ANY damage or liability that result from the use (or misuse) of the information. In the event that an error does occur, we reserve the right to correct, or make changes to, this information at any time.

Disclaimer:

Span data provided herein is indicative based on specific test load conditions (refer to your product Technical Data Sheet). Dimensional and mass data provided herein is indicative based on typical production and may vary with manufacture and material tolerance. Before installing any Eva-Last product, ensure that the application is rational and complies with the local regulations and building codes. Wherever necessary, consult a suitably qualified professional.